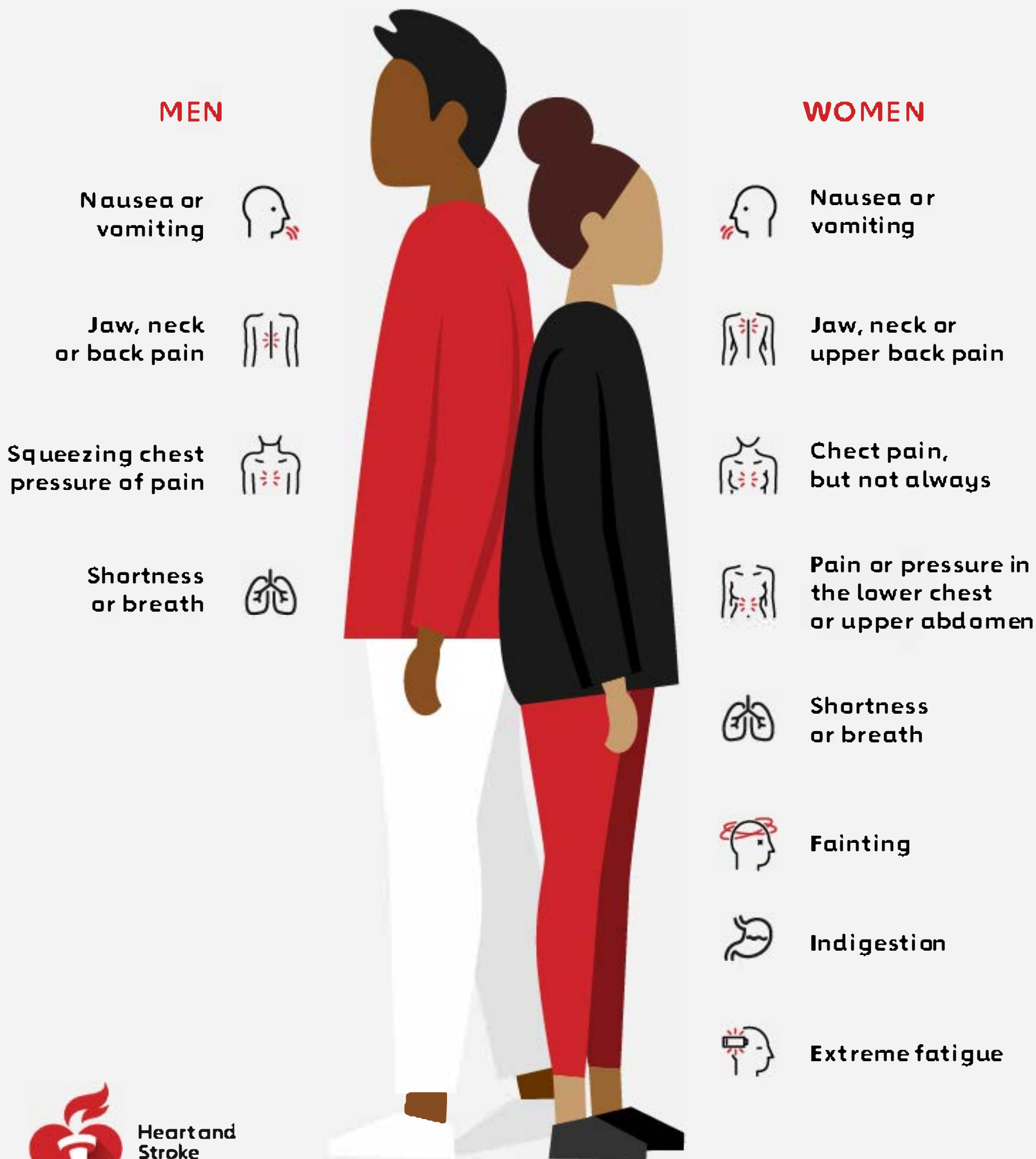


# HEART ATTACK SYMPTOMS: MEN VS. WOMEN

By American Heart Association News

The most common symptom of a heart attack for both men and women is chest pain. But women may experience less obvious warning signs.



Heart and  
Stroke  
Foundation.

India

A subsidiary of the  
American Heart Association.

Source: American Heart Association's journal, *Circulation*  
Published April 4, 2019 | © 2019 American Heart Association, Inc.

Learn more at [heartandstroke.in](http://heartandstroke.in)